



Sustainable Energy
Technology at Work



Sustainable Energy Technology at Work - SETatWork

Sweden

Pernilla Allexandersson

pa@kanenergi.se; +46-733-96 13 39



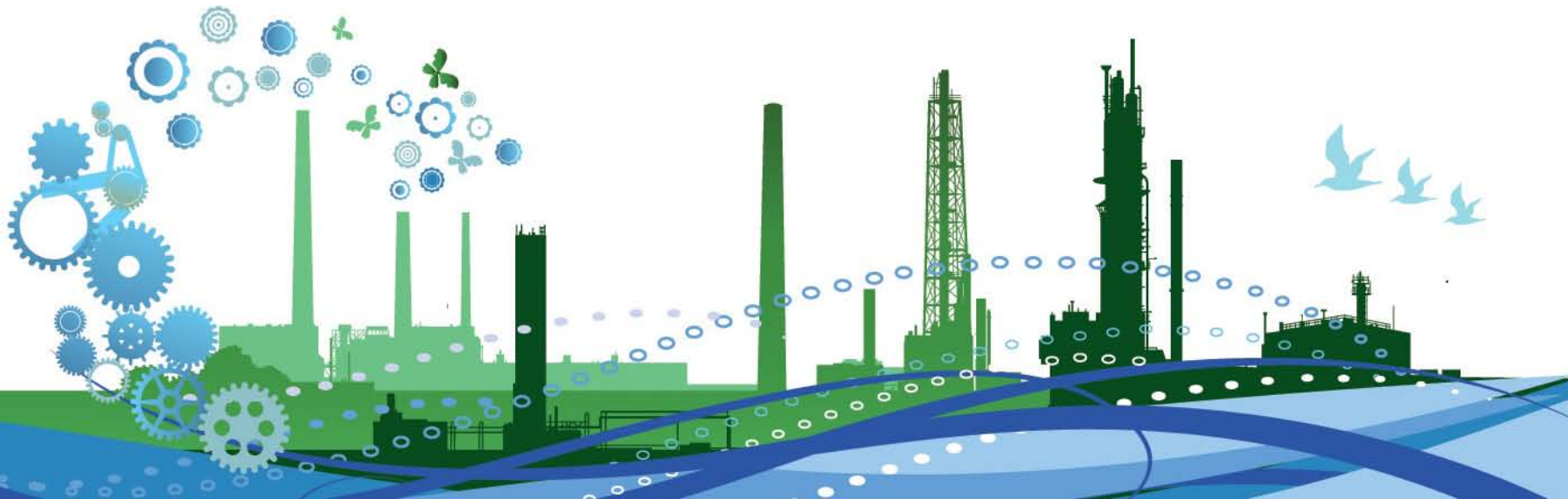
– incentives of climate and energy 2008-2010

- Climate research (2.3 million Euro)
- Energy efficiency measures (30 million Euro)
- Pilot and demonstration projects for second-generation biofuels (14 million Euro)
- Network for wind power (3.8 million Euro)
- Sustainable yield of bioenergy in agriculture and forestry (3.8 million Euro)
- Climate investments in other countries (9.2 million Euro)
- Programme for sustainable cities (33 million Euro)

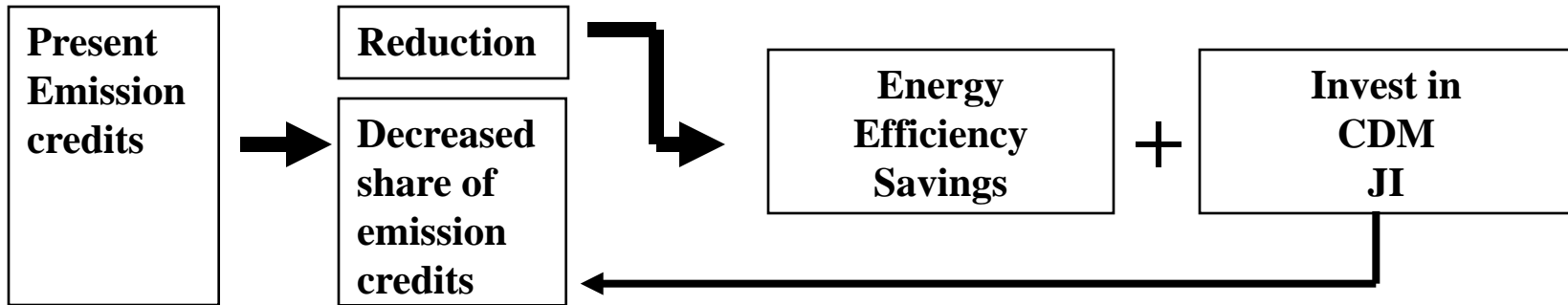
700 installations, covered by European Trading Scheme and are included in the Swedish NAP 2008-2012.

Most important areas:

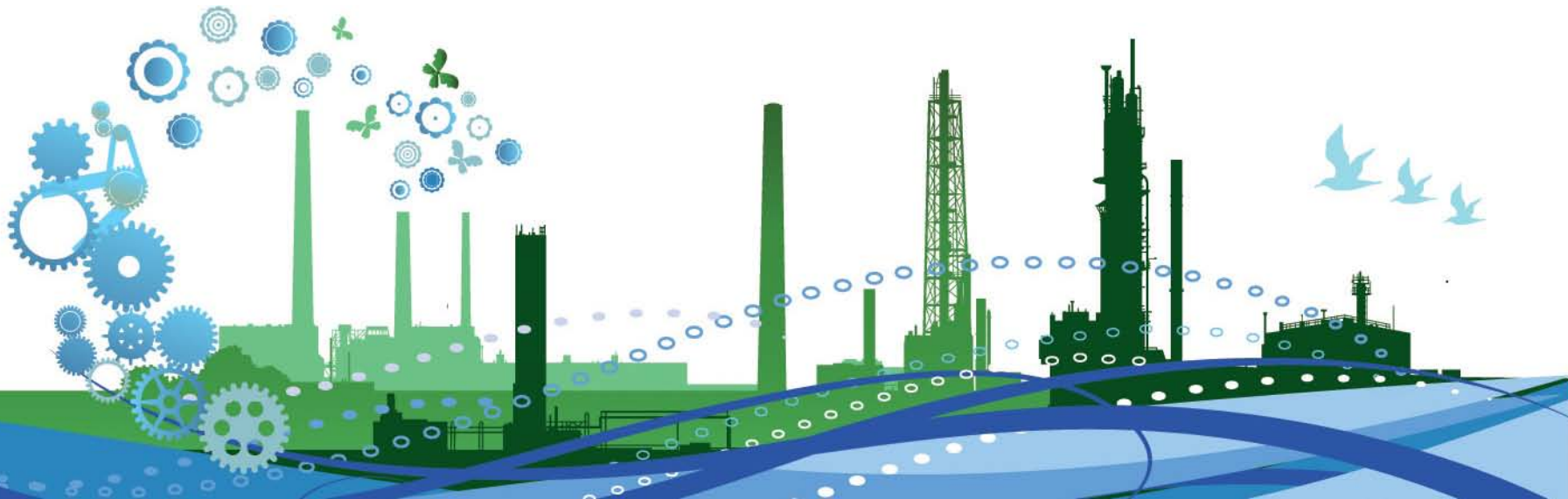
- Energy efficiency in Industry
- Design in Policy strategy and monitoring
- Company image and marketing In-house savings
- Sector benchmarking and assessment tools



EU ETS Industry



Contact SETatWork for ideas of international projects and how to use credits



Good Practices in ETS Industry

The Swedish Energy Agency has through its Program For Energy Efficiency In Energy Intensive Industry enabled an electricity saving of 1 TWh per year. By participating in the program companies in the energy intensive industry may get exempted from the electricity tax. Contact Karolina Petersson for further information: karolina.petersson@energimyndigheten.se.

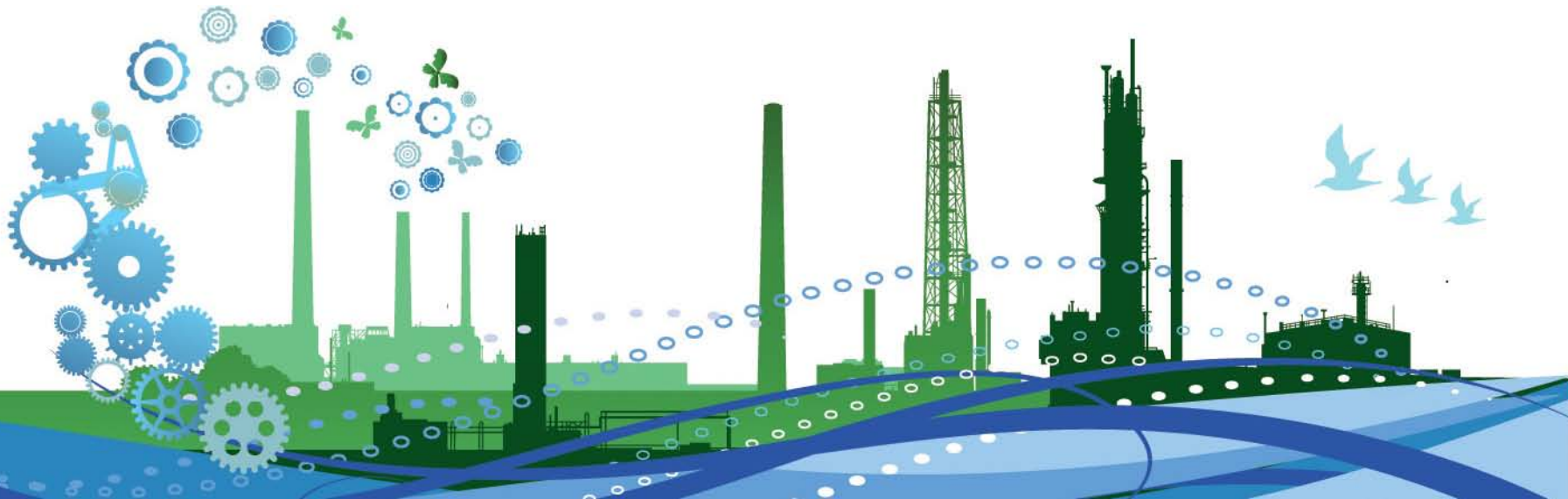
Södra Cell, manufacturing paper pulp, has invested in a new evaporation plant thereby improving energy efficiency at the Värö Mill. Through the investment bark with an energy content of 200 GWh/year will become available for sale. Contact Jonas Eriksson for further information: jonas.eriksson@sodra.se.

Norrmejeriers dairy in Ersboda has been equipped with a biogas plant making waste-water into an energy source. A heat pump recuperates heat in the wastewater after the biogas plant. The energy intensive process of concentrating whey protein through evaporation has been replaced by ultra-filtration. The project has led to significant energy savings and large reductions in wastewater emissions. The investment is repaid in less than 6 years. Contact Tony Bäckström for further information tony.backstrom@norrmejerier.se.



EU ETS Industry in international projects

- SCA, Svenska Cellulosa Aktiebolaget
- Göteborg Energi AB
- Nynäs Petroleum AB
- Perstorp AB



Potentials of delivering CDM and JI

- Bioenergy: *Ageratec, Chemrec AB, Consat AB, Läckeby water group, Malmberg AB, Scandiativan Biogas*
- Wind, solar, water energy: *ABB AB, PV Enterprise Sweden AB, Seabased AB*
- Water treatment: *Läckeby water group, Malmberg AB, Pilum AB*
- Combined heat and power: *LNv Energy AB, MW Power AB*
- Energy savings: *Megtec Systems AB*
- Transports: *Green Cargo AB, Scania AB, Volvo Group*

Sign up today at SETatWork database: www.setatwork.eu



Good Practices – of technology providers

Megtech Systems AB provides technology to produce steam from coal mine ventilation air with a methane content of as little as 0.9%. This is done with a flameless regenerative thermal oxidizer.

At a coal mine in New South Wales, Australia, the technology reduces GHG emissions by 250 000 tons of CO_{2e} /year.

In Henan Province, The ZhengZhou Mining Group chooses to apply a single Vocsidizer from MEGTEC Systems. the technology reduces GHG emissions by 230 000 tons of CO_{2e} up to 2012. If seven Vocsidizers installed in CDM project activity that together will process 22 050 000 m³ CH₄/year. (Source: PDD)

Contact Richard Mattus for further information rmattus@megtec.se



Partners with EEN in Europe; www.enterpriseeurope.se

Working together with Swedish Energy Agency;
www.energimyndigheten.se

Methane to Market: www.methanetomarkets.org

And more in 2010



Find out more about the activities of SETatWork
and access the SETatWork Database at:

www.SETatWork.eu

Contact: **Pernilla Allexandersson**
pa@kanenergi.se; **+46-733-96 13 39**

© SETatWork Project Partners, 2009

SETatWork is supported by the European Commission under the Seventh Framework Programme (FP7). This presentation reflects the author's views. Although the author's best efforts have been made to ensure that the information contained herein is accurate, neither the European Commission, the SETatWork Project Members nor the author are liable for any use that may be made of the information contained herein.

